



SISAL & SEAGRASS

ASSIAN COLLECTION 2023



+971 56 267 9002

<https://sisalcarpets.ae>

SISAL CARPETS

Sisal carpets, a testament to nature's elegance, bring a touch of organic luxury to interior spaces. Derived from the agave plant's robust fibers, sisal is celebrated for its durability, sustainability, and distinctive texture. The natural, earthy tones of sisal carpets seamlessly integrate with various design styles, offering a timeless aesthetic that complements both traditional and contemporary settings.

Crafted with meticulous precision, sisal carpets emanate a warm, welcoming ambiance while remaining resistant to wear and tear, making them an ideal choice for high-traffic areas. Beyond their aesthetic appeal, sisal carpets contribute to environmental sustainability, as the agave plant requires minimal water and pesticides to thrive.

Ideal for those who appreciate the harmony of nature within their living spaces, sisal carpets embody the perfect fusion of functionality and eco-conscious design. Whether adorning a living room, bedroom, or hallway, sisal carpets evoke a sense of tranquility and sophistication, elevating the overall aesthetic of any room. Discover the enduring beauty and eco-friendly charm of sisal carpets as you embark on a journey that seamlessly blends the natural world with the comfort of home.

Laying Recommendations

When laying sisal carpets, it's essential to start with a clean, smooth surface. Install a quality underlay to enhance comfort and prolong the carpet's life. Allow the carpet to acclimate to the room's temperature and humidity before installation. Sisal can expand or contract based on environmental conditions. Professional installation is recommended to ensure proper stretching and secure fitting. Avoid placing heavy furniture directly on the carpet to prevent indentations, and periodically rotate the carpet for even wear.

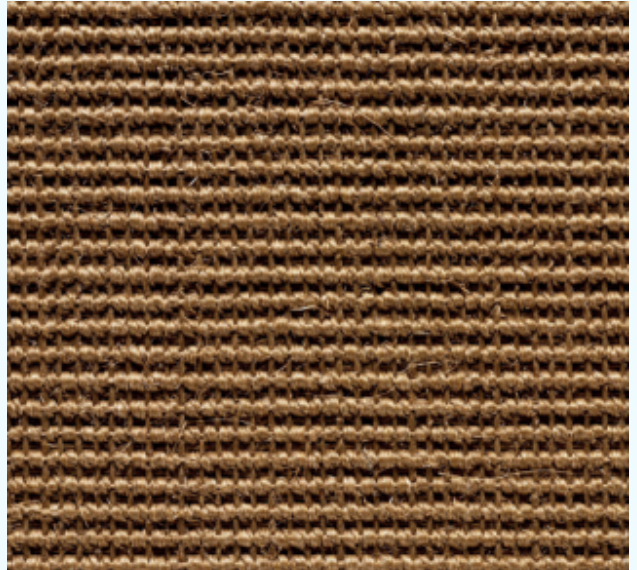
Caring Instructions

To maintain the natural beauty of sisal carpets, vacuum regularly to remove dirt and debris. Address spills promptly with a dry, clean cloth. Avoid excessive moisture, as sisal is sensitive to water. Rotate the carpet periodically to ensure even wear. Use furniture pads to prevent indentation. Professionally clean when needed to preserve the integrity and longevity of this eco-friendly flooring choice.

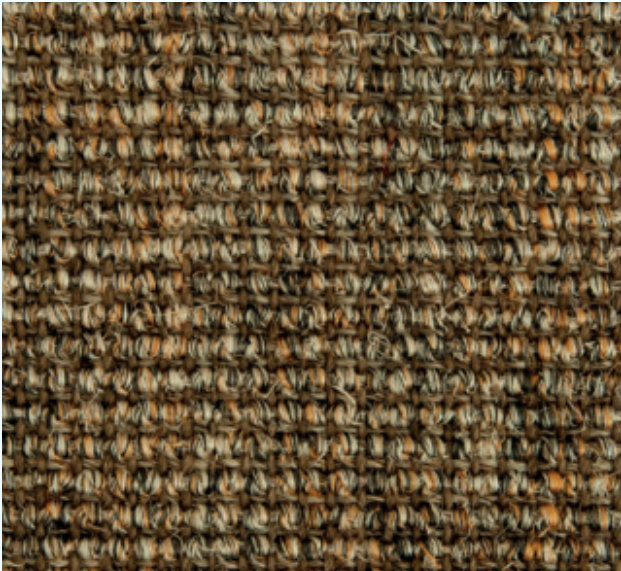
SISAL MINI BOUCLE



MINI BOUCLE 8036



MINI BOUCLE 8047



MINI BOUCLE 8033



MINI BOUCLE 8042



MINI BOUCLE 8011



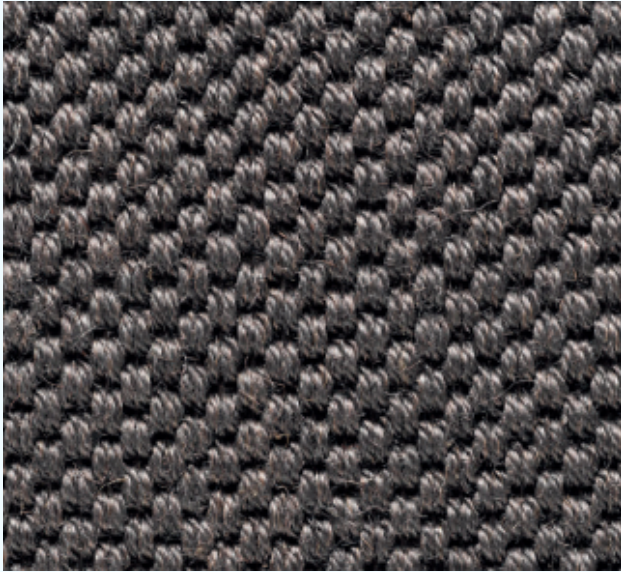
MINI BOUCLE 8070

TECHNICAL SPECIFICATIONS

Manufacturing Process - Woven	Backing Weight - ca. 1,100 gr/m ²	Colour Fastness to Rub - 3-4
Surface Aspect - Mini Boucle	Total Weight - ca. 2,900 gr/m ²	Vertical Resistance - 4
Pile Composition - 100% Sisal	Total Height - ca. 6.5 mm	Flammability - Cfl-s1
Pile Weight - ca. 1,800 gr/m ²	Colour Fastness to Light - 4	Thermal Resistance - 4
Pile Height - ca. 5 mm	Permanent Antistatic - 5	Sound Insulation - 5
Backing - Felt	Surface Resistance - 3-4	Colour Fastness to Water - 3-4



SISAL TIGRA



Tigra 9004



Tigra 9070



Tigra 9042



Tigra 9001



Tigra 9007



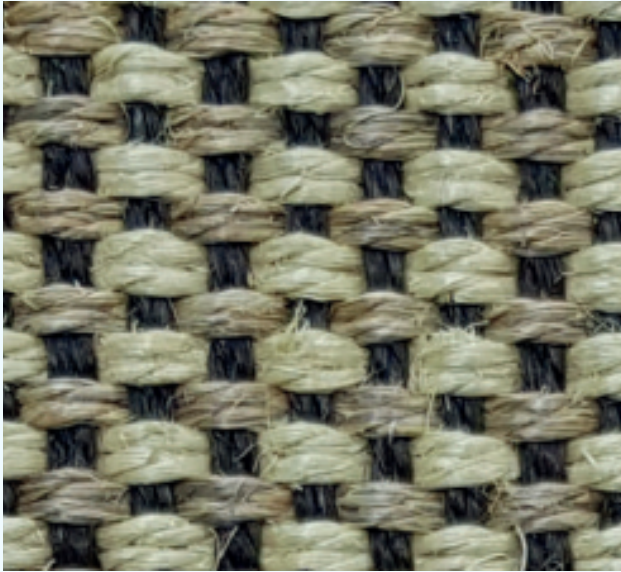
Tigra 9000

TECHNICAL SPECIFICATIONS

Manufacturing Process - Woven	Backing Weight - ca. 1,100 gr/m ²	Colour Fastness to Rub - 3-4
Surface Aspect - Tiger Eye Open	Total Weight - ca. 3,050 gr/m ²	Vertical Resistance - 4
Pile Composition - 100% Sisal	Total Height - ca. 10 mm	Flammability - Dfl-s1
Pile Weight - ca. 1,950 gr/m ²	Colour Fastness to Light - 4	Thermal Resistance - 4
Pile Height - ca. 8 mm	Permanent Antistatic - 5	Sound Insulation - 5
Backing - Felt	Surface Resistance - 3-4	Colour Fastness to Water - 3-4



SISAL KOM



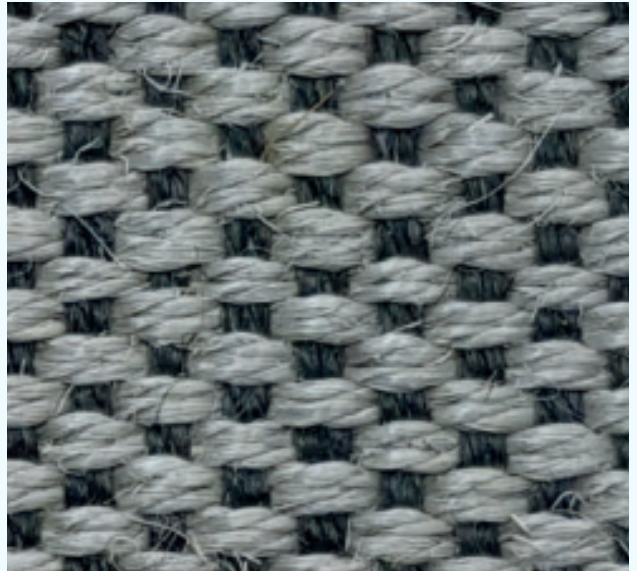
KOM Bi-Color 217



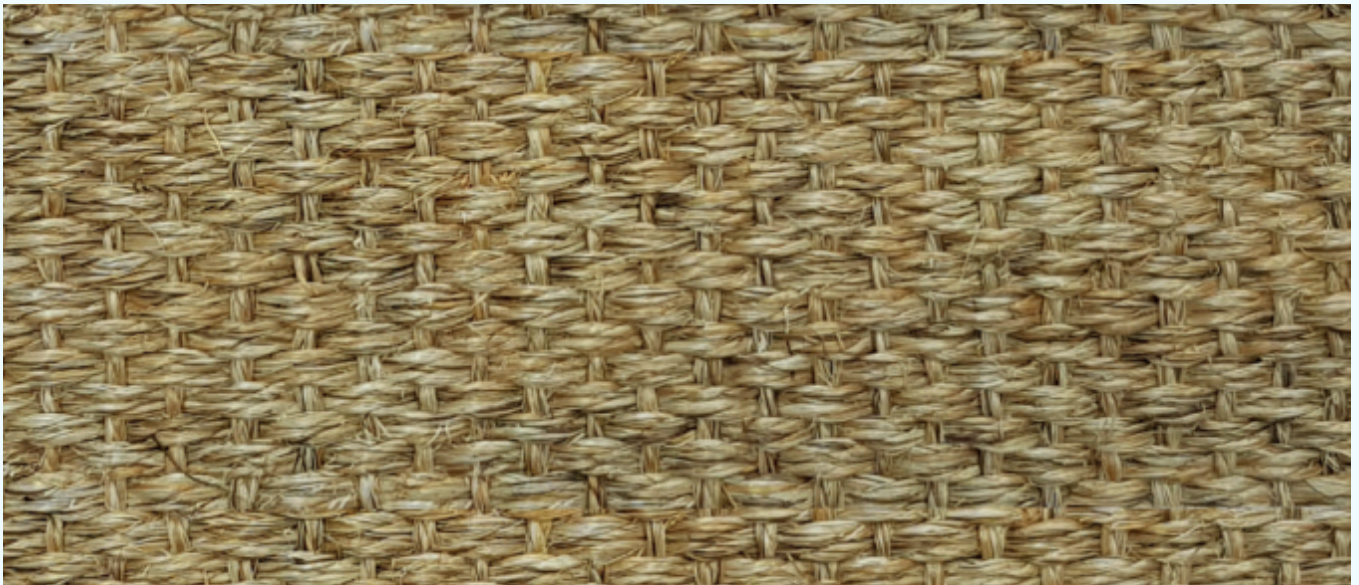
KOM Bi-Color 220



KOM Bi-Colour 245



KOM Bi-Colour 203



SISAL KOM 011

TECHNICAL SPECIFICATIONS

Manufacturing Process - Woven	Backing Weight - ca. 1,100 gr/m ²	Colour Fastness to Rub - 3-4
Surface Aspect - Flat Weave	Total Weight - ca. 2,800 gr/m ²	Vertical Resistance - 4
Pile Composition - 100% Sisal	Total Height - ca. 4.4 mm	Flammability - Dfl-s1
Pile Weight - ca. 1,700 gr/m ²	Colour Fastness to Light - 4	Thermal Resistance - 4
Pile Height - ca. 4 mm	Permanent Antistatic - 5	Sound Insulation - 5
Backing - Felt	Surface Resistance - 3-4	Colour Fastness to Water - 3-4



SISAL SAMBROSSA



SISAL SAMBROSSA 9101



SISAL SAMBROSSA 9104



TECHNICAL SPECIFICATIONS

Manufacturing Process - Woven	Backing Weight - ca. 1,100 gr/m ²	Colour Fastness to Rub - 3-4
Surface Aspect - Large Boucle	Total Weight - ca. 3,450 gr/m ²	Vertical Resistance - 4
Pile Composition - 100% Sisal	Total Height - ca. 10 mm	Flammability - Dfl-s1
Pile Weight - ca. 2,350 gr/m ²	Colour Fastness to Light - 4	Thermal Resistance - 4
Pile Height - ca. 8 mm	Permanent Antistatic - 5	Sound Insulation - 5
Backing - Felt	Surface Resistance - 3-4	Colour Fastness to Water - 3-4



SEA GRASS (ON RUBBER BACKING)



FG-100

Fine Grass - Panama 2 x 1



FG-103

Fine Grass - Panama 3 x 3



FG-104

Fine Grass - Panama 4 x 4



FG-200

Fine Grass - Herringbone

SEAGRASS

The seagrass, a smooth, soft fiber, comes from an aquatic plant that grows in fresh and saltwater estuaries. Seagrass will delight you with its traditional appearance, its natural colors, its natural nonabsorbent properties, and its great resistance, even in damp rooms, as long as there is regular ventilation. It has to be humidified regularly (see care instructions) to keep its elasticity and sheen. Seagrass will find its place quite naturally in all living environments, public and private.

CARE INSTRUCTIONS

Natural floor coverings require regular upkeep and careful use. In order to retain their beautiful appearance longer, vacuum regularly, taking care to brush without rubbing. In addition, once or twice a year, depending on the wear, it is advisable to dry clean the base thoroughly. Seagrass coverings must also be humidified regularly so as to keep its elasticity and sheen.



CONTACT US

<https://sisalcarpets.ae>

+971 56 267 9002

Al Quoz Ind. Area#3, Warehouse#3-M7 –
Dubai United Arab Emirates